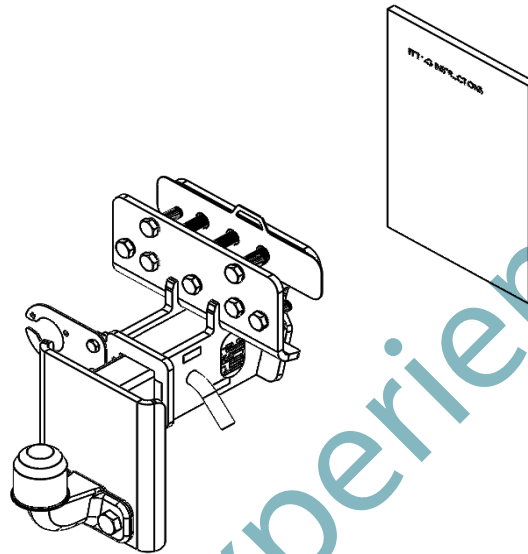


## Prado MY24 Fitting Instruction



ITEM NO.	Part Name	QTY.
1	TOWBAR WELDED ASSEMBLY	1
2	HITCH WELDED ASSEMBLY	1
3	FLANGE TOWBALL	1
4	R-CLIP	1
5	NAS PIN	1
6	BRINK BALL CAP	1
7	BOLTM16 X 45 (10.9)	2
8	FLAT WASHER M16 DIN 933	2
9	SPRING WASHER M16 DIN 128A	2
10	NUT M16 HT HEX	2
11	M12 NORD LOCK WASHER	10
12	BOLT M12X1.25 X 40 HT (10.9)	10
13	BOLT M6X20 HT- DIN 933	2
14	NUT NYLOC M6	2
15	FITTING INSTRUCTION	1
16	0.5mm SHIM PL	2
17	PINCHWELD 10X15MM	1
18	SOCKET PL	1
19	BOLT M10X30(10.9)	1
20	NUT M10 HT HEX - DIN 934	1

### Step 1: Remove bumper

- I. Open the boot section.
- II. Remove the bumper screws around the wheel arches.
- III. Unscrew the bumper brackets.
- IV. Ensure to unscrew the bolts holding the taillights before removing them.
- V. Carefully disconnect the rear sensors, and then unclip the bumper by pulling it downwards and horizontally outwards.
- VI. Lower the spare wheel to gain access to the back of the chassis.

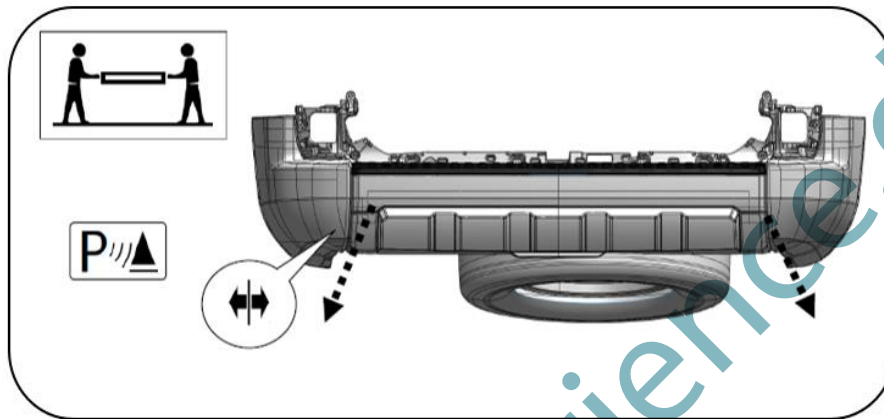


Figure 1: Bumper removal

### Step 2: Fit Nas towbar

- I. Raise the welded assembly to the chassis cross-member until the mounting holes on the welded assembly are concentrically aligned to the chassis cross member.
- II. If the “z” distance is larger than the chassis cross member, place shim plate provided between the chassis cross-member and the towbar assembly to fill the gap between them ensuring that the holes are all concentrically aligned.
- III. Fasten the towbar to the chassis cross-member using the following fasteners as shown in the figure below:
  - 10 x M12 x 1.25 x 40 HT (10.9) bolts
  - 10 x M12 Nord lock washers

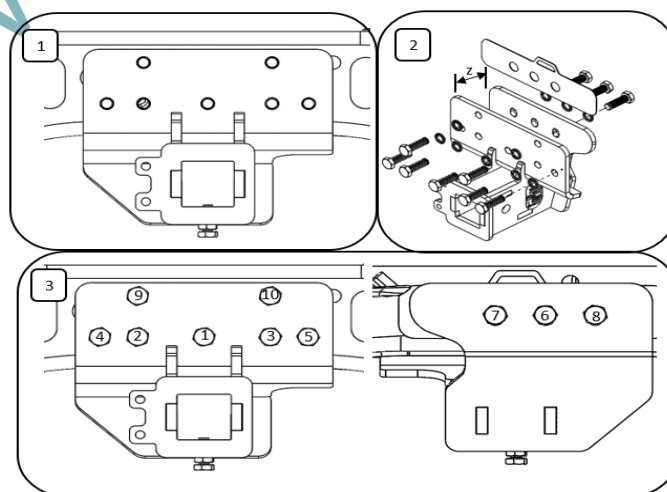


Figure 2: Align towbar to chassis

### Step 3: Fit bumper

- I. Align the bumper cutting template to the centre of the bumper.
- II. Using the dimensions shown below as a guide, cut the bumper.
- III. Reattach the bumper to the vehicle over the Nas receiver. Raise the spare wheel to its original position.

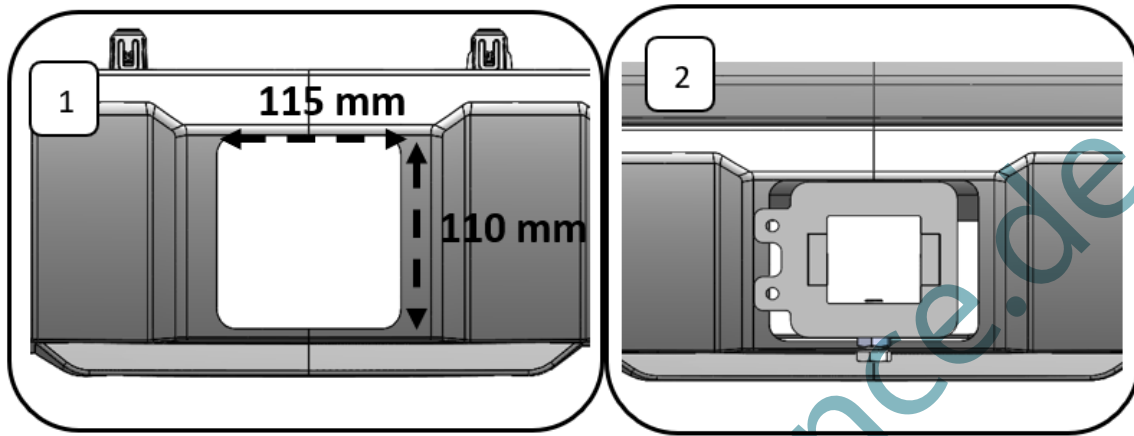


Figure 3: Fit bumper

### Step 4: Secure socket plate

- I. Line up the socket plate mounting holes concentrically to the towbar socket plate mounting holes.
- II. Fasten (hand tighten) the socket plate to the towbar using the following fasteners as shown in the figure below:
  - 2 x M6 x 20 bolts
  - 2 x M6 Nyloc Nuts

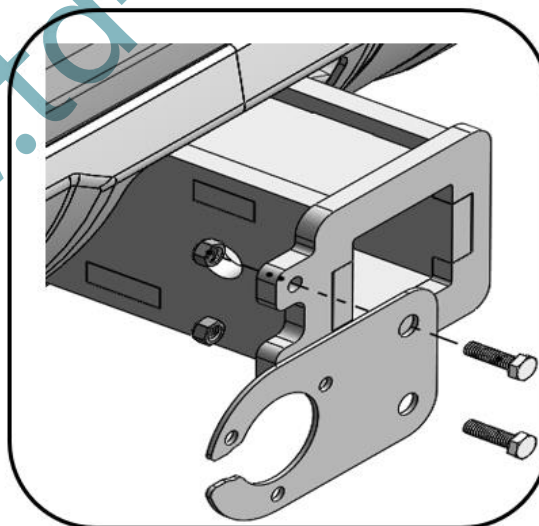


Figure 4: Insert socket plate

**NB:** Ensure that the socket plate is placed with its harness mounting holes forming an upside-down triangle as shown in the figure above.

### Step 5: Fit Towing Hitch

- I. Fit the towing hitch through the towbar Nas receiver.
- II. Concentrically insert the Nas pin to the towbar, securing the towing hitch in place.
- III. Insert the R-clip to the Nas pin to firmly secure the towing hitch to the Nas receiver.

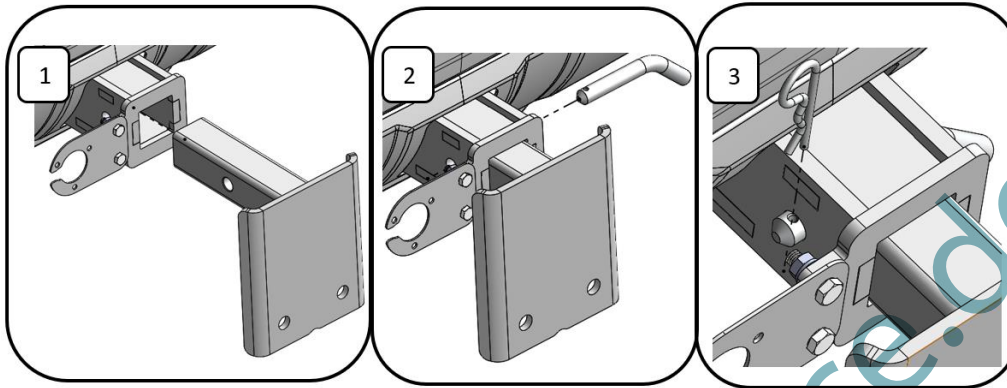


Figure 5: Fit Hitch

### Step 6: Fit flange ball and ball cap

- I. Concentrically align the flange ball to the towing hitch ball plate and insert the bolts to hold it in place.
- II. Fasten (hand tighten) the ball by using the following fasteners as shown in the diagram below:
  - 2 x M16 x 45 (10.9) bolts.
  - 2 x M16 Flat washers.
  - 2 x M16 spring washers.
  - 2 x M16 Hex nuts.

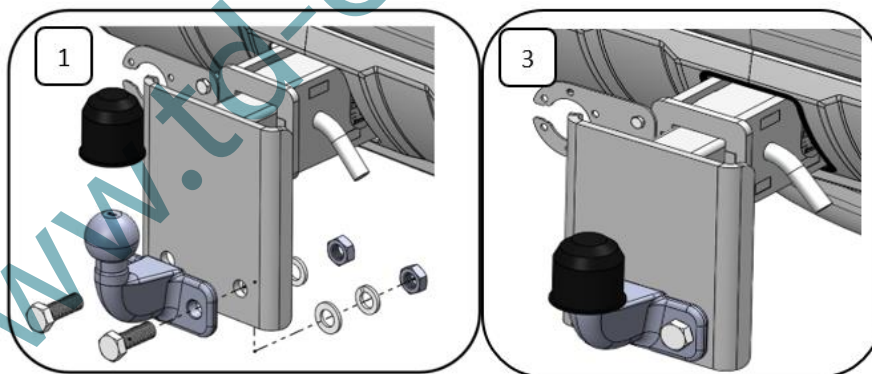


Figure 6: Fit flange-ball, ball cap, and pinch-weld

**NB:** Ensure that the Spring washer is placed in between the flat washer and the nut, on the inside of the towing hitch ball plate.

- III. Fit the pinch-weld over the bumper cut.

## Step 7: Torque Fasteners

Tighten the fasteners to the following recommended torques.

Recommended Bolt Torques.	
Fastener.	Torque (Nm).
M6 x 20 bolts (8.8)	10
M12 x 1.25 x 40 bolt (10.9)	120
M16 x 45 bolts (10.9)	280

Vehicle Specs.	
Towing Capacity	3500 kg
Vertical Load	140 kg

### NOTE: Anti-Rattle Bolt and Nut

- I. Fasten the anti-rattle bolt and nut when **NOT TOWING** to ensure that the hitch does not rattle.
- II. Remove the anti-rattle bolt and nut when **TOWING**.

WARRANTY	
1)	If any product manufactured by Brink Products is found to be defective during a period of twelve (12) months after the date of purchase, Brink Products shall repair (at Brink Products discretion) the defective product or part.
2)	Any defect in a product distributed by Brink Products, but not manufactured by Brink Products, shall be dealt with in accordance with, and to the extent of, the warranty offered by the manufacturer of the product.
3)	Brink Products does not warrant that the products manufactured by it comply with the laws of the place where the products are being purchased or used. It is the sole responsibility of the Purchaser to ascertain whether products being purchased – or the affixation of these products to any other object – comply with the local laws.
4)	Except to the extent described in this warranty, Brink Products shall not be liable for any other claim, including those claims arising from faulty design, the use of the product on any indirect special or consequential damage or injury to any person, company, or any other entity.
5)	Modification or alteration to any product manufactured by Brink Products to enable fitment in conjunction with other vehicle accessories or modifications (e.g. lift kits) will void any warranty claims.